

# NORTHLAKE COMMERCIAL MUPD

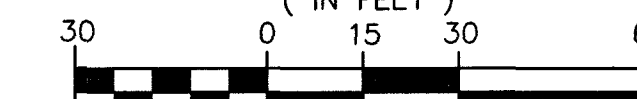
BEING A PORTION OF THE NORTHEAST QUARTER OF THE NORTHEAST QUARTER OF THE NORTHWEST QUARTER OF SECTION 19, TOWNSHIP 42 SOUTH, RANGE 43 EAST, PALM BEACH COUNTY, FLORIDA.

THIS INSTRUMENT PREPARED BY  
DAVID P. LINDLEY  
OF  
**CAULFIELD & WHEELER, INC.**  
SURVEYORS - ENGINEERS - PLANNERS  
7900 GLADES ROAD, SUITE 100  
BOCA RATON, FLORIDA 33434 - (561)392-1991  
CERTIFICATE OF AUTHORIZATION NO. LB3591



NORTH

GRAPHIC SCALE  
(IN FEET)

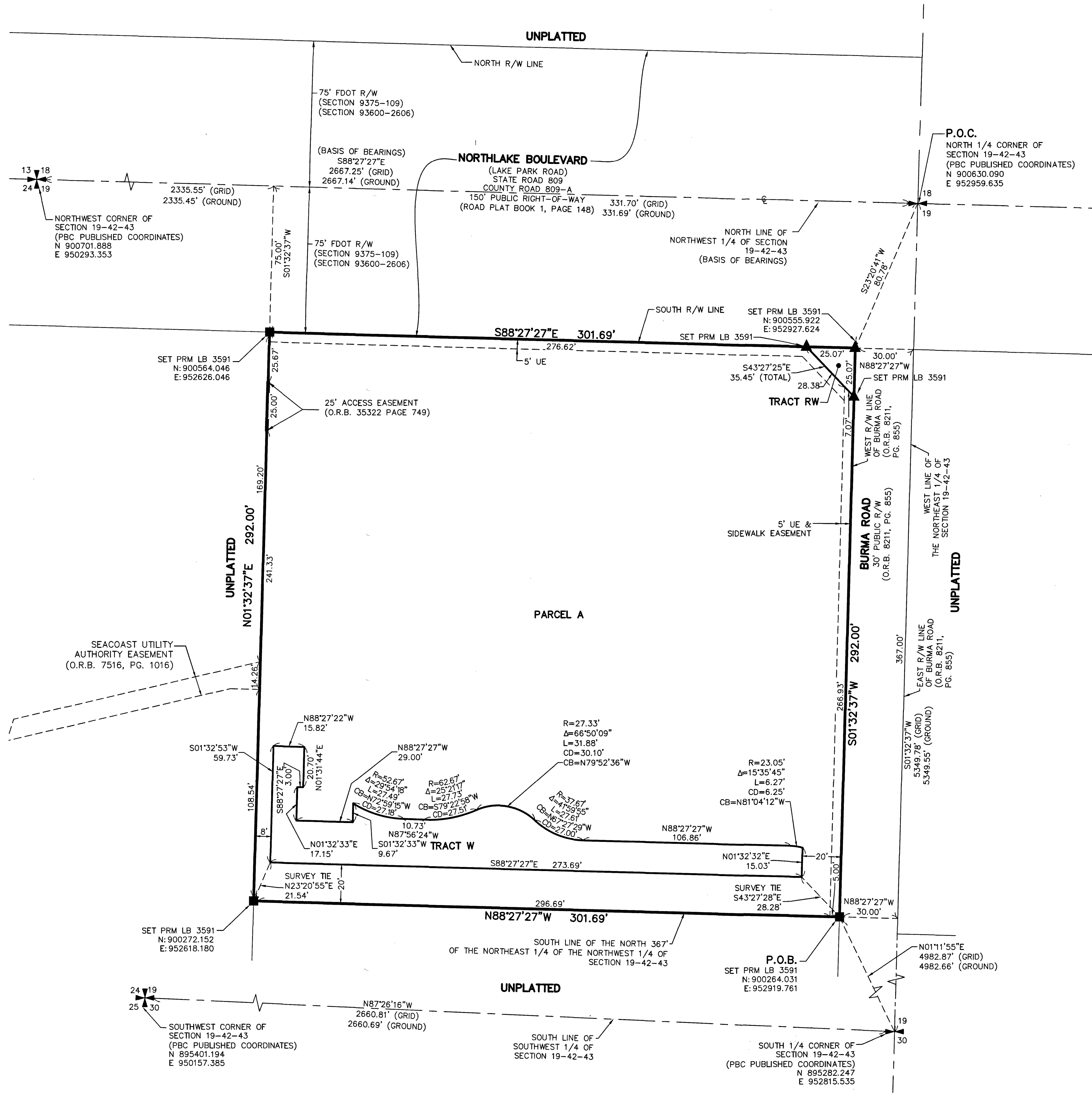


INTENDED DISPLAY SCALE 1 INCH = 30 FEET

190

SHEET 2 OF 2

**NOTES**  
**COORDINATES, BEARINGS AND DISTANCES**  
COORDINATES SHOWN ARE GRID  
DATUM = NAD 83 (1990 ADJUSTMENT)  
ZONE = FLORIDA EAST  
LINEAR UNIT = U.S. SURVEY FEET  
COORDINATE SYSTEM 1983 STATE PLANE  
TRANSVERSE MERCATOR PROJECTION  
ALL DISTANCES ARE GROUND UNLESS OTHERWISE NOTED  
SCALE FACTOR = 1.000042169  
GROUND DISTANCE X SCALE FACTOR = GRID DISTANCE  
BEARINGS AS SHOWN HEREON ARE GRID DATUM,  
NAD 83 (1990 ADJUSTMENT), FLORIDA EAST ZONE.



- LEGEND/ABBREVIATIONS**
- P.O.C. - POINT OF COMMENCEMENT
  - P.O.B. - POINT OF BEGINNING
  - CL - CENTERLINE
  - Δ - DELTA (CENTRAL ANGLE)
  - CB - CHORD BEARING
  - CD - CHORD DISTANCE
  - E - EASTING (WHEN USED WITH COORDINATES)
  - FDOT - FLORIDA DEPARTMENT OF TRANSPORTATION
  - LB - LICENSED BUSINESS
  - L - ARC LENGTH
  - MUPD - MULTIPLE USE PLANNED DEVELOPMENT
  - O.R.B. - OFFICIAL RECORD BOOK
  - N - NORTHING (WHEN USED WITH COORDINATES)
  - P.B. - PLAT BOOK
  - PBC - PALM BEACH COUNTY
  - PG. - PAGE
  - PRM - PERMANENT REFERENCE MONUMENT
  - R - RADIUS
  - R/W - RIGHT-OF-WAY
  - UE - UTILITY EASEMENT
  - 19-42-43 - SECTION 19, TOWNSHIP 42 SOUTH, RANGE 43 EAST
  - PRM ■ - DENOTES SET PERMANENT REFERENCE MONUMENT  
4" X 4" X 24" CONCRETE MONUMENT WITH  
ALUMINUM DISK STAMPED "C&W PRM LB#3591",  
UNLESS OTHERWISE NOTED
  - PRM ▲ - DENOTES SET PERMANENT REFERENCE MONUMENT  
NAIL AND DISC STAMPED "PRM" LB 3591
  - ✱ - INDICATES SECTION CORNER
  - ◄ - INDICATES 1/4 SECTION CORNER